



OnTrak with ReposiTrak

Thought Leadership Webinar Series

CBD in Food, from A to Z

[REPOSITRAK.COM](https://www.repositrak.com)

World's Largest Network of Supply Chain Partners Sharing Documents and Data

Improve Product Safety, and Reduce Cost & Risk

Used in **100+ countries** and
100,000+ connections in the
ReposiTrak network.

Get the most from the network!

- Many of you and your suppliers are likely already using ReposiTrak to share documents with customers
- You can use ReposiTrak to collect and manage your own supplier and quality/safety documents

ReposiTrak®
Compliance
Management



ReposiTrak



Exclusively Endorsed in the Industry



“ReposiTrak augments our food and drug safety efforts...with a **proven, comprehensive and easy-to-implement solution** that **doesn't require systems changes** and is extremely cost effective.”

– Hilary Thesmar, PhD, RD, CFS FMI VP for Food Safety Programs



“We see the ReposiTrak system becoming an **industry standard** for the retail supply chain, helping all trading partners **meet the new federal food safety requirements**, reducing unsalable products and keeping the end consumer healthy.”

--Francis Cameron, President & CEO of ROFDA



“We were looking for a technology partner to help us **raise the bar** not only with our data management and reporting, but also with upgrades to all of our user interfaces. It made perfect sense to partner with ReposiTrak because of their **experience in the industry** and technical capabilities.”

--Robert Garfield, Senior Vice President, SQFI



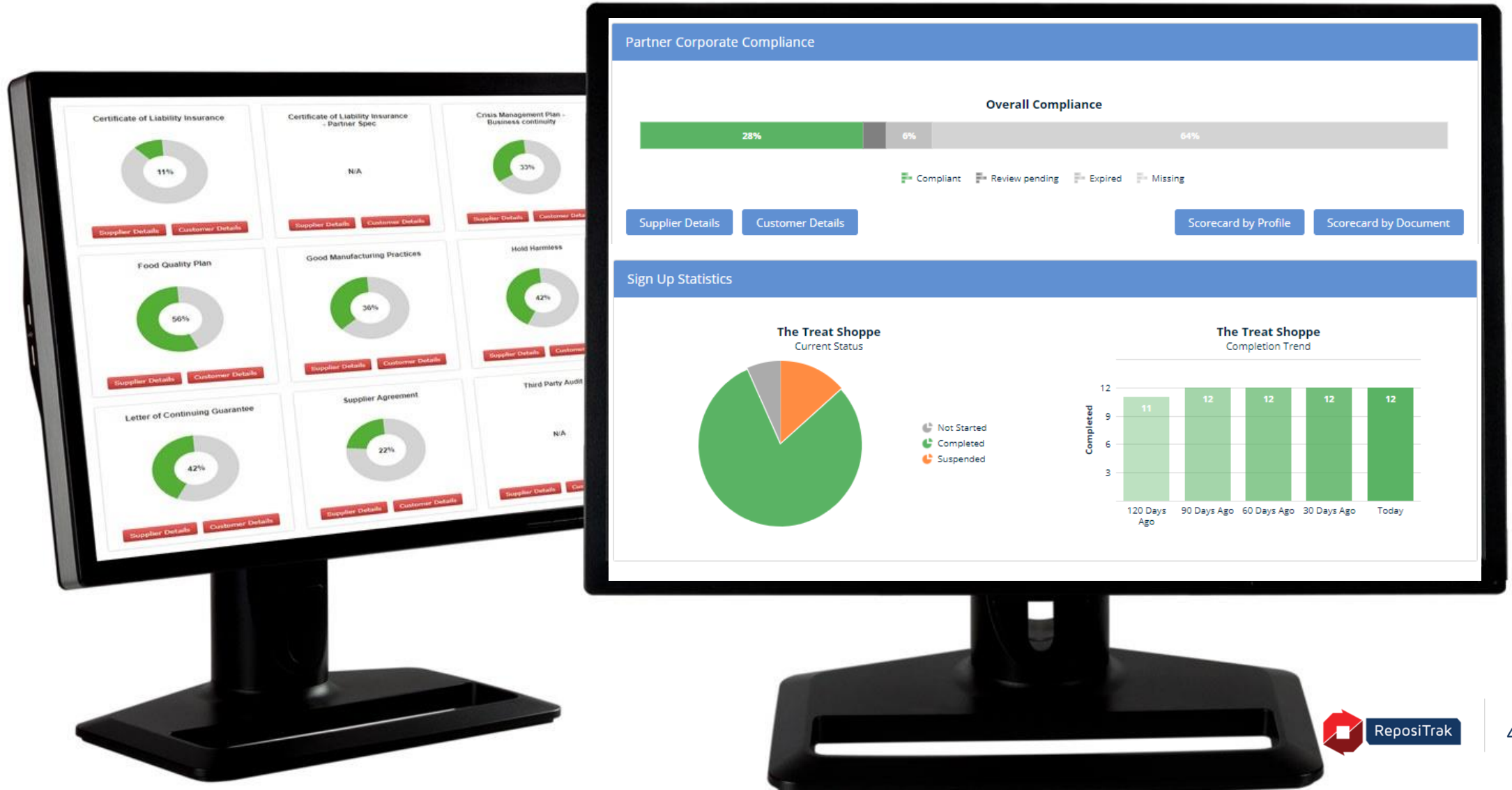
“ReposiTrak is a **pioneering innovator** in delivering robust retail management software solutions for our rapidly changing industry. This technology will equip our members with a toolbox for success in a constantly evolving marketplace. We are thrilled to partner with ReposiTrak as we continue to advance and expand our ecosystem.”

--Patrick Spear, president and CEO of GMDC



Easily Identify Your Risk Areas And Process Failures

One-Minute Compliance Check Makes Reporting & Performance Tracking Easy



We Know You're Busy, So Our Team Does the Heavy Lifting for You

✓ Cloud-based system

- Nothing to install, you just need an internet browser

✓ Set-up is easy

- We just need your supplier list and document requirements to get started, and you can be live in 30 days

✓ We do all the supplier follow-up for you!

- It takes up to 20 “touches” by phone, e-mail and mail on average to get and keep a supplier compliant
- We have a full-time, U.S. based Customer Success Team who follow-up with all of your vendors to ensure adoption and compliance with your requirements



Search Criteria

Categories: Any All

Locations:




Compliance:

Audit Types: Any All

Business Profile: Any All

We've found over 50 suppliers. As a helpful hint, you can allow...
 1. Add additional search criteria above to filter the list.
 2. Email us at CONCIERGE@REPOSITRAK.COM for help finding the right supplier for you.

Similar Suppliers Showing 1-25 of 134

SUPPLIER	SUPPLYING	PROVIDING DOCUMENTS	COMPLIANCE
Acme Industries Massachusetts Hyde Park	Bagels Bakery Assortments Baking Chocolate Baking Flavors & Extracts Baking Mixes Baking Soda Batter & Coating Mixes	Letter of Continuing Guarantee Supplier Self-Assessment Questionnaire (SAQ)	 <input type="button" value="Action"/>
Beta Candies & More Maryland Baltimore Frederick Virginia Roanoke West Virginia Martinsburg	Candy & Chocolate Cereal & Granola Bars Cheese Cheese Puffs Chips Coffee Crackers Dried Vegetables Dry Beans Eggs View 8 more	Carrier Compliance Policy Certificate of Liability Insurance Certificate of Organic Operation-by Facility Emergency 24-hour Contact Number (Esign) FDA Registration - By Facility Genetically Modified Organism (GMO) Statement Hold Harmless Letter of Continuing Guarantee Organic Certification - By Facility Product Recall Program Documentation View 10 more	 <input type="button" value="Action"/>
Charlie Coffee Colorado Denver Sparta California Los Angeles Oakland San Francisco	Candy & Chocolate Cereal & Granola Bars Cheese Cheese Puffs Chips Coffee Crackers Dried Vegetables Dry Beans Eggs View 8 more	Carrier Compliance Policy Certificate of Liability Insurance Certificate of Organic Operation-by Facility Emergency 24-hour Contact Number (Esign) FDA Registration - By Facility Genetically Modified Organism (GMO) Statement Hold Harmless Letter of Continuing Guarantee Organic Certification - By Facility Product Recall Program Documentation View 2 more	 <input type="button" value="Action"/>

Want to Make Your Sales Team Happy?

ReposiTrak helps you connect with new customers in the Marketplace so you can sell more!





OnTrak with ReposiTrak

CBD in Food, from A to Z



Shawn Stevens
Founder, Food Industry Consultant and Lawyer
Food Industry Counsel



Joel Chappelle
Food Industry Consultant and Lawyer
Food Industry Counsel

REPOSITRAK.COM



Food Industry

COUNSEL LLC



CBD IN FOOD

“CBD FROM A TO Z”





Food Industry

COUNSEL LLC



Shawn Stevens

Food Industry Consultant and Lawyer
stevens@foodindustrycounsel.com
920.698.2561



Joel Chappelle

Food Industry Consultant and Lawyer
chappelle@foodindustrycounsel.com
608.751.7726

*We are in the midst of one of the most remarkable
and complex legal and cultural shifts in
American History.*



Unfortunately...



- Confusion
- Misinformation
- Legal ambiguity, and
- Regulatory vacuums abound...

So let's clear the air...



Food Industry
COUNSEL LLC

Today's Webinar Topics

- What is CBD?
- What is the Regulatory and Legal Status in Foods and Beverages?
- How to safely and effectively enter the CBD Market



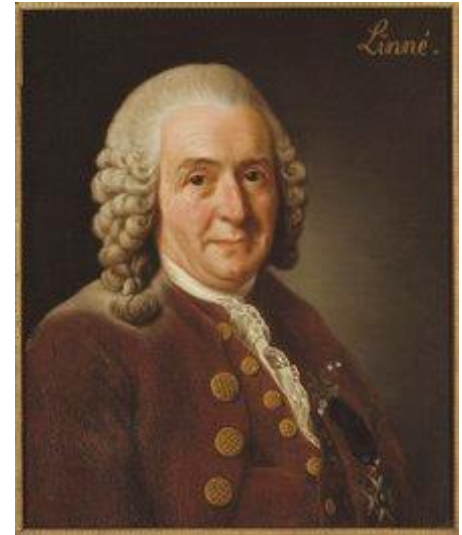
What's in a Name?

Cannabis sativa L.

includes both Hemp and Marijuana



1753: *Carolus Linnaeus* coined the name *Cannabis Sativa*, derived from “Kannabis” = classic Greek word for *hemp* from Sanskrit *cana* and “Sativa” = Latin word for *Cultivated*.



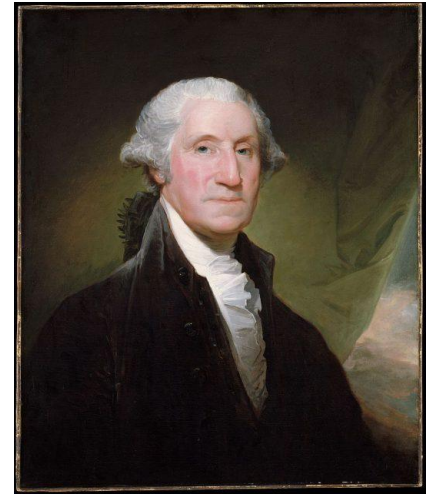
Interesting Fact: *Cannabis* and *Humulus* (*Hops*) are closely related and belong to the same family, Cannabinaceae.



Food Industry
COUNSEL LLC

United States

George Washington cultivated hemp in abundance at Mt. Vernon, and in his farm journal of August 7, 1765, Washington notes that he “began to separate the male from the female hemp... rather too late.”



The first American flag sewn by Betsy Ross was made from industrial hemp.



Food Industry
COUNSEL LLC

Hemp & Marijuana

***Same Species of Plant
but with one Important Difference***



Food Industry
COUNSEL LLC

What is Cannabidiol (CBD)?

CBD is a cannabinoid. It was discovered in 1940 and is 1 of approximately 113 cannabinoids discovered to date.

Clinical research on CBD is ongoing, and scientists are still not exactly sure how it works.

Preliminary studies and anecdotal evidence suggest it has applications for anxiety, cognition, seizure disorders, inflammatory conditions, intestinal disorder, skin care, cancer, and pain.

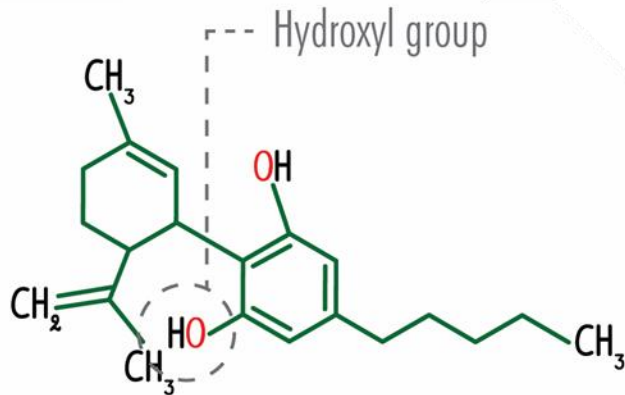
Market Projections: **\$22 Billion by 2022!**



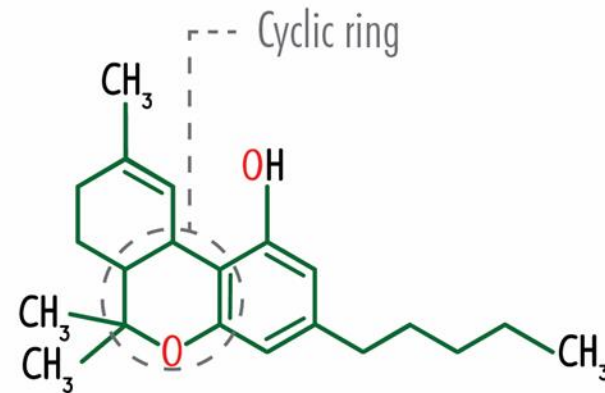
Food Industry
COUNSEL LLC

Comparing CBD & THC

Cannabidiol (CBD)



Tetrahydrocannabinol (THC)



CBD Science

Scientists at New York University are studying CBD as a possible treatment for autism spectrum disorders.

Spanish researchers are testing both THC and CBD on an aggressive brain cancer called glioblastoma.

The FDA approved drug Epidiolex, which is CBD, has shown remarkable efficacy against intractable seizure disorders.



Regulatory & Legal Status of CBD



Food Industry
COUNSEL LLC

Cannabis Law



State v. Federal Conflict

“This Constitution, and the Laws of the United States which shall be made in Pursuance thereof; and all Treaties made, or which shall be made, under the Authority of the United States, shall be the supreme Law of the Land; and the Judges in every State shall be bound thereby, any Thing in the Constitution or Laws of any State to the Contrary notwithstanding.”



Hemp & Marijuana – 2018 Farm Bill

Hemp is defined under the 2018 Farm Bill to include any cannabis plant, or derivative thereof, that contains not more than 0.3 percent delta-9 tetrahydrocannabinol ("THC") on a dry-weight basis.



Cannabidiol Confusion



Assuming cannabidiol does not contain any THC (which is more than the undersigned knows), in order to not be deemed “marijuana” under Idaho Code §37-2701(t), it must be derived or produced from (a) mature stalks of the plant, (b) fiber produced from the stalks, (c) oil or cake made from the seeds or the achene of such plant, (d) any other compound, manufacture, salt, derivative, mixture, or preparation of the mature stalks, or (e) the sterilized seed of such plant which is incapable of germination.

In other words, **the CBD must both contain zero THC and be derived from one of the five identified parts of the cannabis plant, otherwise it is illegal in Idaho under current law.**

<https://odp.idaho.gov/cannibidiol/>

Federal Regulation of CBD



Food Industry
COUNSEL LLC

Federal Regulation of CBD



The 2018 Farm Bill directs the USDA to issue regulations and guidance to implement a program for the commercial production of industrial hemp in the United States.



The FDA regulates food, drugs, and supplements.



Food Industry
COUNSEL LLC

Food, Drug, or Supplement?





Regulation of CBD

- FDA recognizes the potential opportunities that cannabis-derived compounds may offer and acknowledges the significant interest in these products.
- **Bottom Line:** It is currently *illegal* to market CBD by adding it to a food or labeling it as a dietary supplement.



What's Next?



Enforcement Discretion?

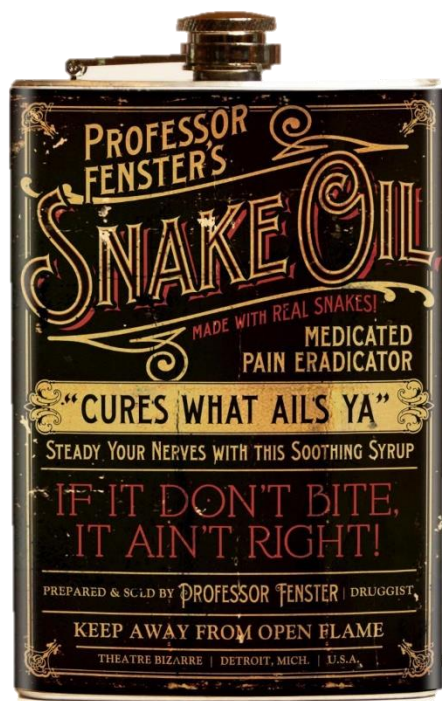
March 5, 2020 FDA Report

FDA's report signaled that the Agency is exploring (1) issuing a risk-based enforcement discretion policy, in guidance, and (2) engaging in rulemaking that would allow dietary supplements containing CBD to be marketed lawfully.





“CLAIM-BASED” ENFORCEMENT



- “CBD has also been shown to be effective in treating Parkinson’s disease.”
- “CBD is linked to the effective treatment of Alzheimer’s disease....”
- “CBD has been demonstrated to have properties that counteract the growth of spread of cancer.”
- “CBD was effective in killing human breast cancer cells.”



Regulation of CBD

Market Challenges



CULTIVATION



RETAIL

TRANSPORTATION



PROCESSING



Supply Chain Complexity



STORAGE



Food Industry
COUNSEL LLC

Ongoing Market Challenges

1. Lack of Developed Data
2. Different State Regulations
3. Different Transport Regulations
4. Lack of Federal Clarity



Overcoming Market Challenges

1. Comprehensive Supplier Agreements;
2. Caution when labeling and marketing;
3. Plan and Communicate.



QUESTIONS?



Food Industry
COUNSEL LLC



Food Industry

COUNSEL LLC



Shawn Stevens

Food Industry Consultant and Lawyer
stevens@foodindustrycounsel.com
920.698.2561



Joel Chappelle

Food Industry Consultant and Lawyer
chappelle@foodindustrycounsel.com
608.751.7726



Upcoming Webinar

COVID-19 and the New Normal in the Food Supply Chain

Thursday, June 18, 1pm ET

Registration invitation to follow via email

REPOSITRAK.COM